



Since 1977

LIFEGUARD®

PORTABLE POWER SOLUTIONS



Electrical

Jackson Industries

Founded by Jim Jackson in 1977, Auckland's Jackson Industries is a multi-faceted company providing diverse engineering expertise – from electrical equipment, through precision CNC machining and tooling, to composite structures and the development of bespoke polymers.

Innovation and development are the common themes running through the company's DNA.

Family-owned-and-operated, the company's origins lie in electrical equipment – with an emphasis on safety. The company has grown to become Australasia's leading supplier of industrial power applications and portable power solutions, and is particularly well-known for its LIFEGUARD® power distribution systems.

These enclosures are manufactured in highly-resilient polyethylene, glass-reinforced plastic or stainless steel.

Many products have become industry standard, using components from suppliers such as Fuji Electric, ABL Sursum, Wieland and Multi-contact Earthing Systems.

Developing and manufacturing the LIFEGUARD® product has created and

nurtured niche engineering skills – an evolutionary process which has seen the establishment of specialist divisions within Jackson Industries.

Jackson Industries Divisions are:

Electrical: Manufacturing industrial power applications and portable power solutions.

Hire & Service: Hiring electrical distribution equipment to reticulate power around new building sites.

Precision Machining: Producing tooling and moulds for clients in an enormously varied range of industry sectors.

Composites: Creating purpose designed components in materials such as fibreglass, kevlar and carbon fibre.

Polymers: Developing specialist compounds to meet unusual composite engineering needs.

Architectural Formworks: Making high-precision moulds for casting concrete, extensively used in architectural applications.



LIFEGUARD® PSOA

The LIFEGUARD® 4 and 6 are single phase Portable Socket Outlet Assemblies (PSOA).

They meet the requirements of ASNZS 3012, and have been issued with Certificate of Approval number V05583 (Residual Current Device - Portable Type).

Class H to ASNZS 3190.

LIFEGUARD® 4 AND 6:

- Available in 10A, 15A or 16A sockets
- Suitable for use on building sites
- Meets OSH and Tradesmen specifications
- Can be built to meet specific requirements



LG4 PSOA

LG6 PSOA

LG6.16A

SPECIFICATIONS

SUPPLY INPUT POWER	10A, 15A or 16A single phase + N + E
FREQUENCY	50 - 60Hz
RCD	2 pole, 30mA, 230VAC 10KA rating
SOCKET OUTLETS	4 or 6 double pole, auto-switching socket outlet
IP RATING	65
MATERIALS	High impact corrosion resistant polyethylene enclosure
WEIGHT	2kg (approximate)
CABLE LENGTH	2m

LIFEGUARD® 7

TEMPORARY POWER RETICULATION SYSTEM:

Manufactured to AS/NZS 3012.

Incorporated RCDs break the electric circuit, should a tool or a wiring fault develop, causing current leakage to earth.

- Reduces site establishment costs
- Provides a safe working environment
- Simplifies site expansion
- Interconnects to supply power to multi-storey or large construction sites
- Alternative sockets available to suit specific requirements
- Small and Large enclosures



LG7S (Small)



LG7L (Large)

SPECIFICATIONS

SUPPLY INPUT POWER	32A or 63A, three phase + N + E, 415VAC
FREQUENCY	50 - 60Hz
RCD	4 pole, 30mA, 230 - 415VAC
SOCKET OUTLETS	4x 15A Auto switching outlets with 2P 240V RCDs 1x 32A three phase 3P + N + E 415VAC 1x LG16 Take-off
INTERCONNECTION	32A three phase + N + E, 415VAC, CEE17, IEC309
MATERIALS	High impact corrosion resistant polyethylene enclosure
IP RATING	44 - 66

LIFEGUARD® 16

PORTABLE POWER SUPPLY

Manufactured to ASNZS 3012.

Can be fed from LIFEGUARD® 83, 17 or as its own stand alone reticulation system.

- Additional sockets available to suit specific requirements
- Most popular choice for larger construction sites
- Interconnects in various ways to supply power to multi-storey or large construction site



LG16

SPECIFICATIONS

SUPPLY INPUT POWER	32A, three phase + N + E, 415VAC IEC
FREQUENCY	50 - 60Hz
RCD	4 pole, 30mA, 230 - 415VAC
SOCKET OUTLETS	1x 32A three phase, 3P + N + E, 415VAC 1x 16A single phase, 2P + E IEC 8x 10/15A single phase 2P + E, 230VAC
INTERCONNECTION	32A, three phase + N + E, 415VAC, CEE17, IEC309
MATERIALS	High impact corrosion resistant polyethylene enclosure
WEIGHT	15kg
IP RATING	44 - 66

LIFEGUARD® 17

ASSEMBLY FOR CONSTRUCTION SITE (ACS)

Built to comply with ASNZS 3012.

Perfect choice for medium to large multi and single storey construction sites.

- Reduces your site establishment costs
- Provides a safer environment for your staff

- Simplifies changes as your site expands
- Comes with 2x LG16 feeds
- Additional socket outlets to suit customer requirements
- Can be fitted with specialist outlets and current monitoring facilities for the film industry



LG17

SPECIFICATIONS

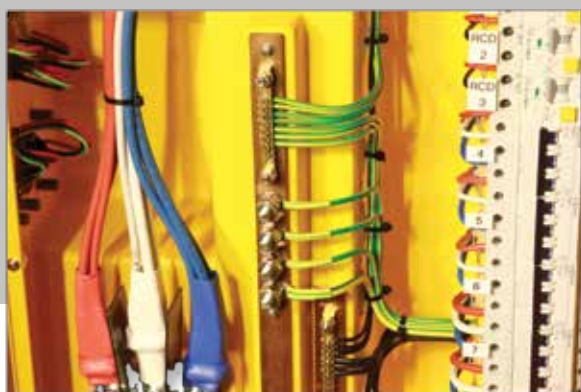
SUPPLY INPUT POWER	63A, three phase + N + E, 415VAC IEC
FREQUENCY	50 - 60Hz
RCD	4 pole, 30mA, 230 - 415VAC
SOCKET OUTLETS	12x 10 or 15A single phase, 2P + E, 230VAC 2x 32A three phase, 3P + N + E, 415VAC 2x LG16 Takeoff IEC 1x 16A single phase, 2P + E IEC
INTERCONNECTION	63A, three phase + N + E, 415VAC, CEE17, IEC309
MATERIALS	High impact corrosion resistant polyethylene enclosure
WEIGHT	20kg
IP RATING	44 - 66

LIFEGUARD® 83

MASTER SWITCHBOARD

Fully adaptable to include MCCB main switch up to 600 amps, wall mounting straps, in ground mounts, power lock connectors, also provision for metering, crane connections and alimacs.

- For the distribution of power
- Used throughout major construction projects
- Provides master isolation, sub circuit protection including sub-board distribution (typically LG16, LG17 and LG7 units)
- Site hut reticulation (LG15.06)
- Provision for lighting
- Fitted with RCDs to provide protection against electrocution



LG83 (Inside)



LG83

SPECIFICATIONS

INPUT POWER	Up to 225A/600A, 415VAC 50Hz
GEAR TRAY	GRP (Glass-reinforced plastic)
DOOR	Lockable
MOUNTING	Galvanised steel tube with wheels
MATERIALS	GRP
WEIGHT	75kg
IP RATING	44 - 66

Earth Screened Cables

SINGLE PHASE CABLES

- 2.5mm or 6.0mm
- 15A, 16A or 32A

THREE PHASE LIFEGUARD® LEADS

- Available in 32A, 63A and 125A current ratings
- 10m, 20m or 30m or custom lengths
- Designed for use on construction sites
- Suitable for interconnection of the LIFEGUARD® power reticulation system (Appendix K ASNZS 3012)

COPPER BRAIDED SCREEN

- Provides protection for the cores
- Acts as the earth to provide maximum safety

CONNECTORS

- 5 pin IP67 rated
- Comply with IEC60309
- Fitted at the end of each lead



15A single Phase Lead

32A three Phase Lead

63A three Phase Lead

NOTE: Standard cable lengths are 10m, 20m, 30m

SPECIFICATIONS

VOLTAGE	250/440V (2.5mm ²) 600/1000V (6 - 25mm ²)
CONDUCTOR	Annealed Copper
INSULATION	2 core – Light Blue, Brown 3 core – Red, White, Blue 4 core – Red, White, Blue, Black
BRAID SCREEN	Flexible copper braid
MAX TEMP	75°C
SHEATH	Nitrile PVC, Type 5V - 90

Customisation

Jackson Industries has been in Onehunga, Auckland since 1977 and has constantly grown over the years. As we have grown we have expanded into new technologies including Precision Machining, Composites, Polymers and Architectural Formworks.

With all this technology available there are almost no limits to the level of customisation. If you have special site requirements or just want something different, simply call 0800 LIFEGUARD® and speak to our experienced sales staff.



Custom LG 17



Custom LG 83

SPECIFICATIONS

Custom 63A Board

3x 63A 3 pin single phase

6x 32A 3 pin single phase

10x 10A flat pin single phase

Phase monitoring loops

Designed & built for the TV and Film Industry

SPECIFICATIONS

Custom 1000A Main Distribution Board

1000A main isolator

6x 125A 5 pin socket outlets

2x 63A 5 pin socket outlets

2x hardwire 250A takeoffs

Built in current and voltage monitoring

Window Module

REPLACEMENT WINDOW

- Fast and easy installation
- Kitset assembly
- Ideal for New Zealand conditions

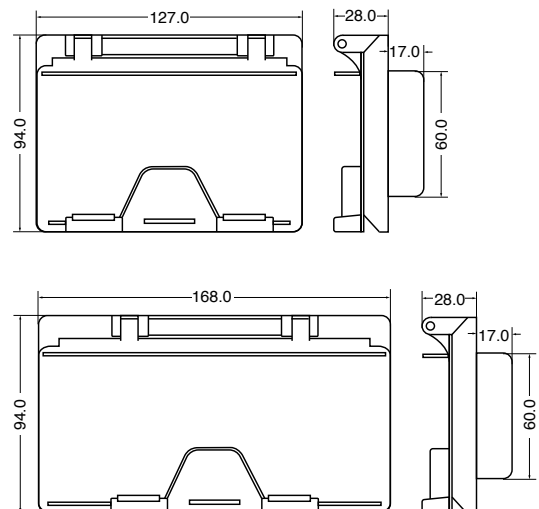
- Easily fitted to both metal and plastic surfaces
- Required where equipment needs to be both accessible and watertight
- Available in two sizes



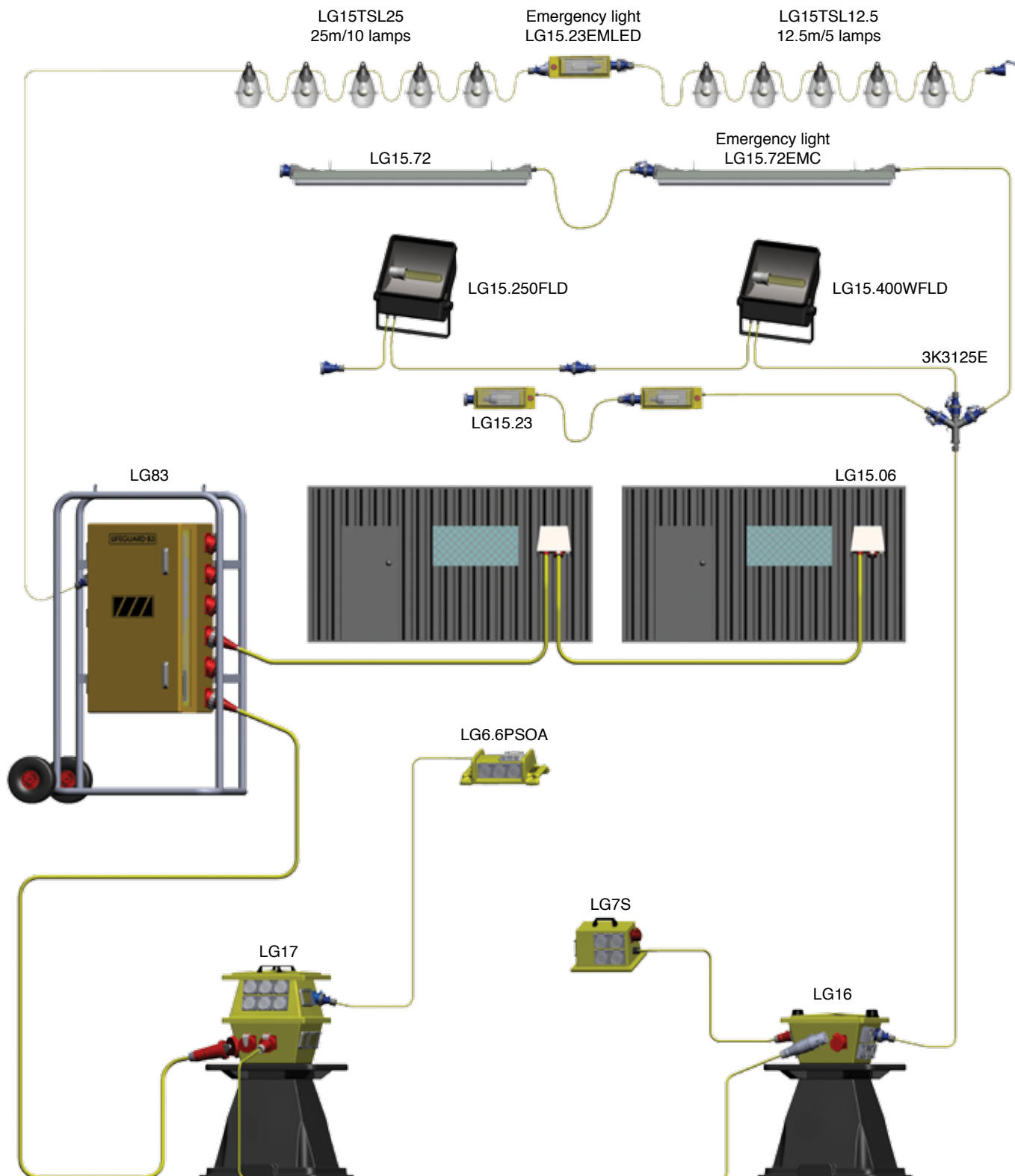
Watertight Window Module

SPECIFICATIONS

IP RATING	67
CONFIGURATION	DIN
MATERIAL	Polycarbonate
PART NUMBERS	WIN123G (Small) WIN164G (Large) DINRAILMT (Bracket x2)



System Diagram





Electrical



Hire &
Service



Precision
Machining



Composites



Polymers



Architectural
Formworks

www.jackson.co.nz

NORTH ISLAND
18 Gloucester Park Road
Onehunga, Auckland
0800 543 348

SOUTH ISLAND
26 Tahuna Street
Wainoni, Christchurch
03 377 7247

sales@jackson.co.nz