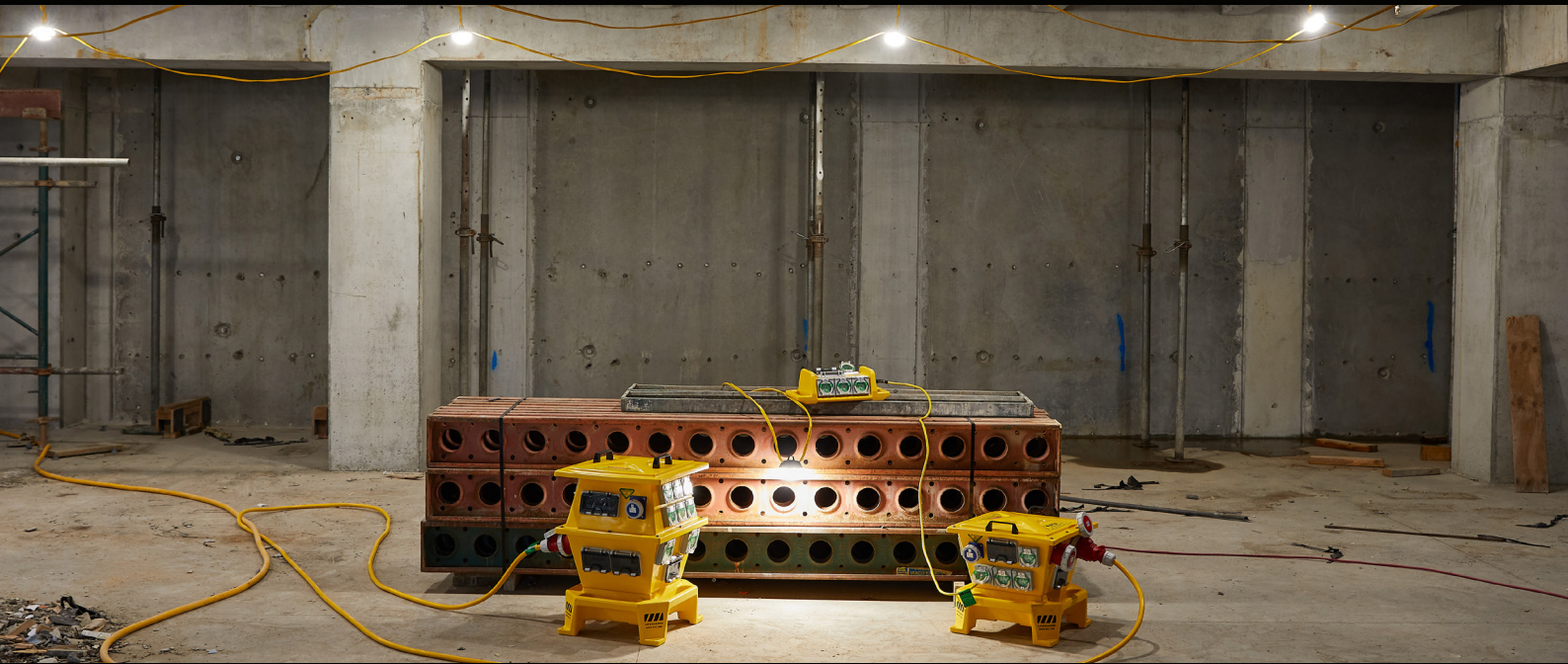


# LIFEGUARD®

## CONNECTION OPTIONS



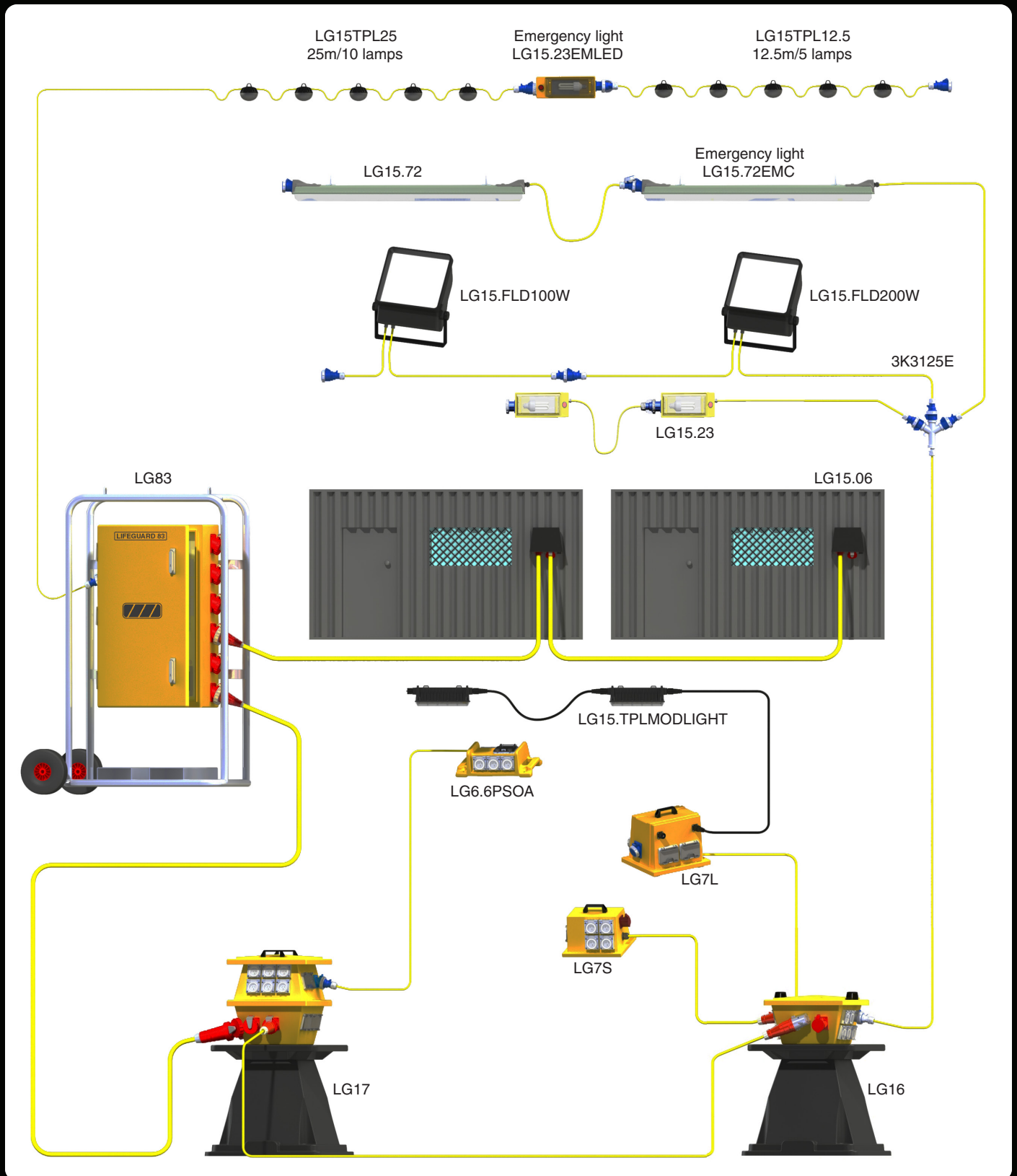
The distribution of portable power is just that – providing power across a site that requires safe, temporary power. Sometimes the use of one LIFEGUARD® is sufficient, other times, more than one unit is needed. The LIFEGUARD® Connection Table (below) and System Diagram (next page) demonstrate how our units connect to create an entire site solution.

		MAIN UNIT											TYPE OF POWER SUPPLY		
		LG6	LG7	LG16	LG17	LG83	LG20B	LG26B	LG33	LG34	LG9	LG15	LG37	Portable	Hardwired
SECONDARY UNIT	LG6		✓	✓	✓	✓	✓	✓	✓	✓	✓		✓		
	LG7		✓	✓	✓	✓	✓	✓	✓	✓	✓		✓		
	LG16		✓	✓	✓	✓	✓	✓	✓	✓	✓		✓		
	LG17				✓	✓		✓	✓	✓			✓		
	LG83					✓								✓	
	LG20B														✓
	LG26B														✓
	LG33														✓
	LG34														✓
	LG9		✓*	✓*	✓*	✓*	✓*	✓*	✓*	✓*	✓*			✓*	✓*
	LG15				✓	✓	✓	✓	✓	✓		✓			✓
	LG37														✓
	Lighting	✓	✓	✓	✓	✓	✓	✓	✓	✓	✓		✓	✓	

Example: The table shows that the LG16 (MAIN UNIT) can supply power to the LG6, LG7, LG16, LG9\* and the Lighting systems (SECONDARY UNIT). Single phase and three phase leads can be connected to all units dependant on unit configuration ie plug and connector type.

\*The LG9 can only connect depending on configuration.

# LIFEGUARD® CONNECTION OPTIONS



For more information:



[jackson.co.nz](http://jackson.co.nz)  
[sales@jackson.co.nz](mailto:sales@jackson.co.nz)  
 0800 543 348