



We set the standard. Since 1977

PLUGS, CONNECTORS & SOCKETS



Electrical

Plugs and Connectors

IEC60309

Flange Outlets

IEC60309

Three Phase Female Connectors



PART NO. FEMALE	K54S35	K44S35	K53S35	K43S35	K52S35	K42S35	K42V05*	K51V35	K41S35
AMPERAGE	125A	125A	63A	63A	32A	32A	32A	16A	16A
PINS	3+N+E	3+E	3+N+E	3+E	3+N+E	3+E	3+E	3+N+E	3+E
EARTH POSITION									
VOLTAGE	400V	400V	400V	400V	400V	400V	400V	400V	400V
PART NO. MALE	S54S35	S44S35	S53S35	S43S35	S52S35	S42S35	S42V05*	S51V35	S41S35



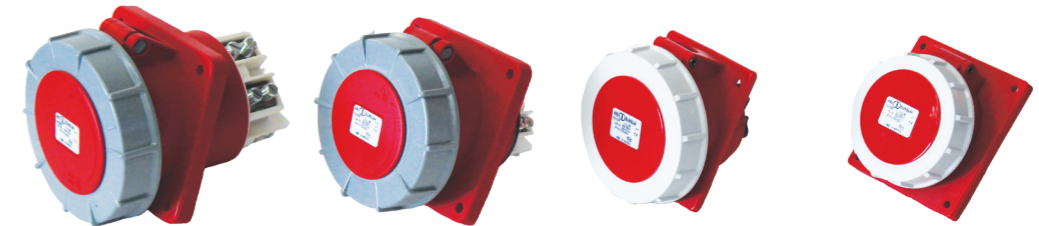
Three Phase Male Plugs

*Reefer

Three Phase Straight Flange Outlets



PART NO. STRAIGHT FLANGE	F54S357	F44S357	F53S357	F52S350	F42V350	F42SC50*	F51V350	F41S350	
AMPERAGE	125A	125A	63A	32A	32A	32A	16A	16A	
PINS	3+N+E	3+E	3+N+E	3+N+E	3+E	3+E	3+N+E	3+E	
EARTH POSITION									
VOLTAGE	400V	400V	400V	400V	400V	400V	400V	400V	
PART NO. ANGLED	F54S388	F44S388	F53S385	F43S384	F52V370	F42V370	F42SC83	F51S383	F41S370



Three Phase Angled Outlets

*Reefer

Single Phase Female Connectors



PART NO. FEMALE	K33S25	K32S25	K31S25	K31S15
AMPERAGE	63A	32A	16A	16A
PINS	1+N+E	1+N+E	1+N+E	1+N+E
EARTH POSITION				
VOLTAGE	240V	240V	240V	110V

Single Phase Male Plugs



PART NO. MALE	S33S25	S32S25	S31S25	S31V15
AMPERAGE	63A	32A	16A	16A
PINS	1+N+E	1+N+E	1+N+E	1+N+E
EARTH POSITION				
VOLTAGE	240V	240V	240V	110V

Single Phase Straight Flange Outlets



PART NO. STRAIGHT FLANGE	F33S257	F32S250	F31S252	F31V152
AMPERAGE	63A	32A	16A	16A
PINS	1+N+E	1+N+E	1+N+E	1+N+E
EARTH POSITION				
VOLTAGE	240V	240V	240V	110V

Single Phase Angled Outlets

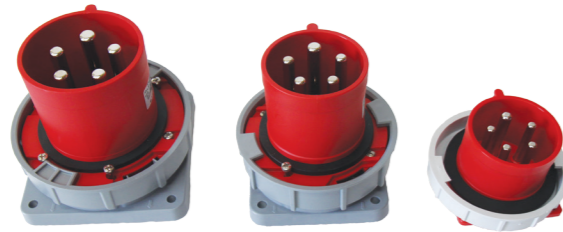


PART NO. ANGLED	F33S284	F31S270
AMPERAGE	63A	16A
PINS	1+N+E	1+N+E
EARTH POSITION		
VOLTAGE	240V	240V

Panel Mount Inlets & Outlets

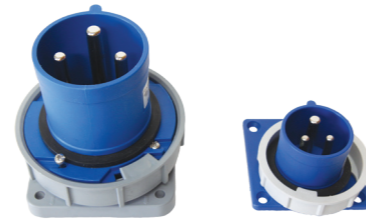
IEC60309

Three Phase Appliance Inlets



PART NO.	A54S37	A44S37	A53S37	A43S35	A52V37
AMPERAGE	125A	125A	63A	63A	32A
PINS	3+N+E	3+E	3+N+E	3+E	3+N+E
EARTH POSITION					
VOLTAGE	400V	400V	400V	400V	400V

Single Phase Appliance Inlets



PART NO.	A33S27	A32V26	A31V27
AMPERAGE	63A	32A	16A
PINS	1+N+E	1+N+E	1+N+E
EARTH POSITION			
VOLTAGE	240V	240V	240V

Caravan Series Inlets



Black: 1154.200

PART NO.	1154.210
AMPERAGE	16A
PINS	1+N+E
EARTH POSITION	
VOLTAGE	240V

PART NO.	1168.160
AMPERAGE	16A
PINS	1+N+E
EARTH POSITION	
VOLTAGE	240V

PART NO.	G31V20
AMPERAGE	16A
PINS	1+N+E
EARTH POSITION	
VOLTAGE	240V

Panel Mount Sockets

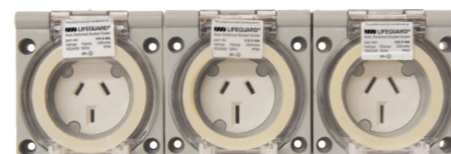
PART NO.	ABL432D060	ABL440D060	ABL450D060	ABL532D060	ABL540D060	ABL550D060
AMPERAGE	32A	40A	50A	32A	40A	50A
PINS	3+E	3+E	3+E	3+N+E	3+N+E	3+N+E
EARTH POSITION						
VOLTAGE	400V	400V	400V	400V	400V	400V



Flat Pin Outlets – Autoswitched

ASNZS 3112

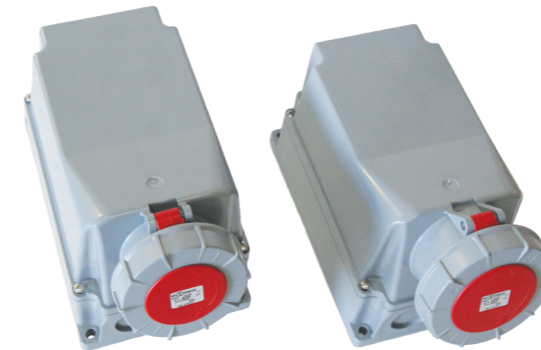
PART NO.	JEI310D066	JEI315D066	JEI320D066
AMPERAGE	10A	15A	20A
PINS	1+N+E	1+N+E	1+N+E
EARTH POSITION			
VOLTAGE	240V	240V	240V



Surface Mount Outlets

IEC60309

Surface Socket Outlets



PART NO.	D54S37	D44S37	D53S37	D43S37
AMPERAGE	125A	125A	63A	63A
PINS	3+N+E	3+E	3+N+E	3+E
EARTH POSITION				
VOLTAGE	400V	400V	400V	400V

PART NO.	D52V35	D42S35	D42SC5
AMPERAGE	32A	32A	32A
PINS	3+N+E	3+E	3+E
EARTH POSITION			
VOLTAGE	400V	400V	400V

PART NO.	D51V35	D41V35	D31V15
AMPERAGE	16A	16A	16A
PINS	3+N+E	3+E	3+E
EARTH POSITION			
VOLTAGE	400V	400V	110V

Switched Socket Outlets



PART NO.	C54S355	C44S354	C53S355	C43S355
AMPERAGE	125A	125A	63A	63A
PINS	3+N+E	3+E	3+N+E	3+E
EARTH POSITION				
VOLTAGE	400V	400V	400V	400V

PART NO.	C52S352	C42S352	C42SC52
AMPERAGE	32A	32A	32A
PINS	3+N+E	3+E	3+E
EARTH POSITION			
VOLTAGE	400V	400V	400V

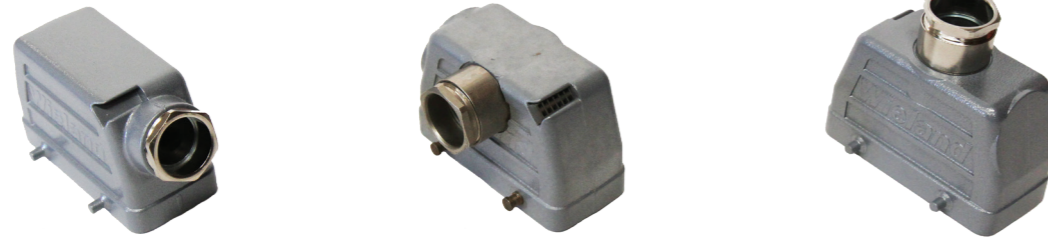


PART NO.	C51S352	C41S352
AMPERAGE	16A	16A
PINS	3+N+E	3+E
EARTH POSITION		
VOLTAGE	400V	400V

*Reefer

Wieland Multipole

Hoods with Lugs



Narrow Side - 70.350.**28.0 Broad Side - 70.351.**28.0 Top - 70.352.**28.0

Hoods with Levers



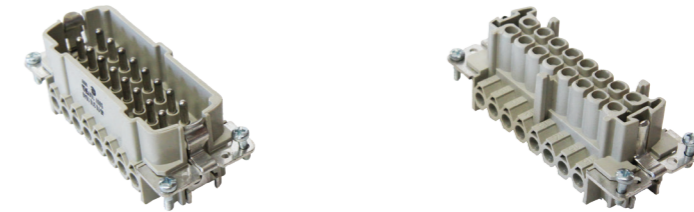
Narrow Side - 70.355.**28.0 Broad Side - 70.356.**28.0 Top - 70.357.**28.0

Inserts



Male Insert - 70.310.**40.0 Female Insert - 70.300.**40.0

Inserts



Male Insert - 70.310.**40.0 Female Insert - 70.300.**40.0

Housing with Levers



Open Bottom - 70.320.**28.0 Bottom - 70.333.**28.0 Narrow Side - 70.331.**28.0

Housing with Lugs



Open Bottom Lid - 70.325.**28.0 L - R Side Entry - 70.340.**28.0

Specifications

No. of pins available	6, 10, 16, 24, 32, 48
Current Rating	16A, 35A or 40A
Voltage	415 VAC - 450 VDC
IP Rating	55

** denotes the no. of pins required
 eg. 70.310.1640.0 = 16 pin male insert
 eg. 70.310.2428.0 = 24 pin male insert

- Single lever option available
- Also comes in 48 pole version

Protection Covers

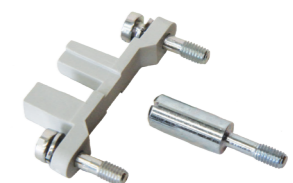


Available for 6, 10, 16, 24, 32, 48 pin sizes

Strain Relief



Coding Inserts



www.jackson.co.nz

NORTH ISLAND
18 Gloucester Park Road
Onehunga, Auckland
0800 543 348

SOUTH ISLAND & WELLINGTON
30 Lane Street
Woolston, Christchurch
03 377 7247

sales@jackson.co.nz